

Historic, archived document

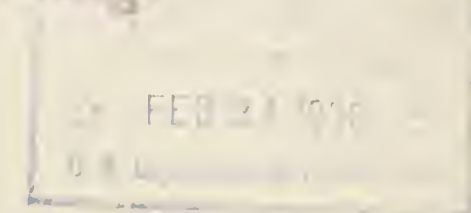
Do not assume content reflects current scientific knowledge, policies, or practices.

PHONE BALLARD
564

KITAZAWA SEED CO.

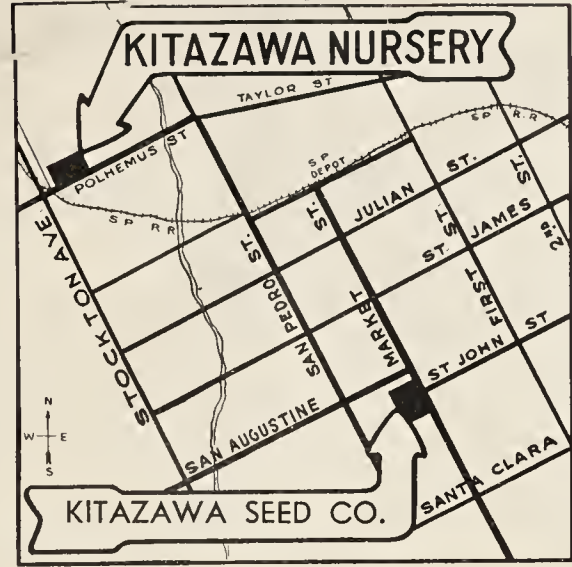


Returned for Postage



U. S. DEPARTMENT OF AGRICULTURE,
WASHINGTON, D. C.

BUREAU OF PLANT INDUSTRY
Fruit and Vegetable Crops and Diseases



G. KITAZAWA, Proprietor
85 NORTH MARKET ST.
SAN JOSE, CALIF.
VEGETABLE SEEDS, GARDEN TOOLS
FERTILIZER, SPRAY MATERIAL
INSECTICIDES
FLOWER SEEDS, LAWN SEEDS

THE BEST IS ALWAYS CHEAPEST
Seed is the lowest-priced item that enters into garden operations, therefore you should be particular as to the source of your supply, as a few cents saved in the cost may cause the loss of many dollars in the resultant crop. Most satisfactory results come from planting Kitazawa's Seed. None Better.

NON WARRANTY NOTICE—Kitazawa Seed Co. give no warranty, express or implied, as to description, quality, productiveness or any other matter of any seeds, bulbs, plants or trees they send out, they are not responsible in any way for the crop.

VEGETABLE SEEDS

Ask for Prices of Quantities

BEANS—DWARF OR BRUSH			
	Pkt.	1/2 lb.	1 lb.
Bountiful or Six Weeks.....	.05	.15	.30
French String Beans.....	.05	.15	.30
Stringless Fr. Strg. Beans.....	.05	.15	.30
Davis White Wax.....	.05	.15	.30
Pencil Pod Black Wax.....	.05	.15	.30
Fordhook Bush Lima.....	.05	.15	.30
BEANS—POLE OR RUNNING			
	Pkt.	1/2 lb.	1 lb.
Kentucky Wonder, Br. Sd.....	.05	.15	.30
Kentucky Wonder Wh. Sd.....	.05	.15	.30
Tall Hort, or Speckled Cranberry05	.15	.30
Blue Lake or White Creaseback05	.15	.30
BEETS FOR TABLE			
	Pkt.	1/2 lb.	1 lb.
Crosby's Egyptian05	.50	.80
Detroit Dark Red.....	.05	.50	.80
Extra Early Egyptian.....	.05	.50	.80
Early Wonder05	.50	.80
BEETS FOR STOCK			
	Pkt.	1/2 lb.	1 lb.
Golden Tankard35	.60	.60
Red Eckendorf35	.60	.60
Yellow Eckendorf35	.60	.60
Sugar Beet35	.60	.60

CABBAGE			
	Pkt.	1/2 lb.	1 lb.
Copenhagen Market05	2.50	2.50
Early Flat Dutch.....	.05	6.00	6.00
Savoy Cabbage05	4.00	4.00
Red Cabbage.....	.05	3.00	3.00
CAULIFLOWER			
Early Snowball05	—	—
CARROTS			
	Pkt.	1/2 lb.	1 lb.
Bunting05	.45	.80
Chanteney Half Long.....	.05	.45	.80
Danvers Half Long05	.45	.80
Oxheart05	.45	.80
Imperator05	.45	.80
Long Orange05	.45	.80
CELERY			
	Pkt.	1/2 lb.	1 lb.
Golden Self Blanching French New Type.....	.05	3.50	6.00
Utah05	.55	10.00
Rooted Celery	—	—	3.50
CHICORY			
	Pkt.	1/2 lb.	1 lb.
Small Rooted (Radich) Large Rooted	—	—	2.00
—	—	—	1.50
CORN			
	Pkt.	1/2 lb.	1 lb.
Low Top, Sweet Alameda.....	.05	.30	.30
Golden Bantam05	.30	.30
Oregon Evergreen05	.30	.30
Tamale Corn05	—	—

CUCUMBERS			
	Pkt.	1/2 lb.	1 lb.
Clark's Special (Lg. Grn.) ..	.05	.65	1.20
Early Fortune05	.65	1.20
Pickling05	.65	1.20
Lemon05	.90	2.00
CANTALOUPE OR MUSKMELON			
	Pkt.	1/2 lb.	1 lb.
Hale's Best (H. B.)05	.60	1.00
Honey Dew05	.80	1.50
Golden Beauty Casaba05	.80	1.50
EGG PLANT			
	Pkt.	1/2 lb.	1 lb.
New York Purple05	—	6.00
Black Beauty05	—	6.00
ENDIVE			
	Pkt.	1/2 lb.	1 lb.
Green Curled05	.55	1.00
Large Green Curled05	.55	1.00
Escarolle05	.55	1.00
KALE			
	Pkt.	1/2 lb.	1 lb.
Jersey or 1000 Head05	.60	1.00
Tall Curled Scotch05	.60	1.00
LETTUCE			
	Pkt.	1/2 lb.	1 lb.
Los Angeles or New York Special05	.70	1.25
Improved No. 1205	.70	1.25
Roman Lettuce05	.70	1.25
Prize Head05	.70	1.25



BEANS Kentucky Wonder



CUCUMBER



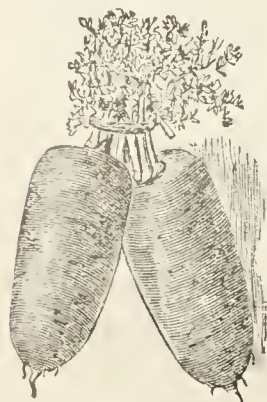
RADISH White Tip



CORN Sweet Alameda

VEGETABLE SEEDS

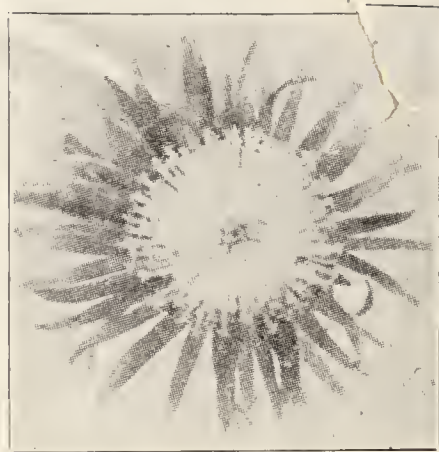
ONION			
	<i>Pkt.</i>	$\frac{1}{2}$ lb.	1 lb.
Green Onion05	1.60	3.00
Australian Brown (Buck-skin)05	.80	1.50
Yellow Globe05	1.10	2.00
Sweet Spanish05	1.10	2.00
Silverskin05	1.60	3.00
PARSLEY			
	<i>Pkt.</i>	$\frac{1}{2}$ lb.	1 lb.
Champion Moss Curled05	.55	1.00
Plain Leaved05	.55	1.00
PARSNIP			
	<i>Pkt.</i>	$\frac{1}{2}$ lb.	1 lb.
Hollow Crown05	.55	1.00
PEAS			
	<i>Pkt.</i>	$\frac{1}{2}$ lb.	1 lb.
Imp. Tall Telephone05	.15	.30
Strategem05	.15	.30
Hundredfold05	.15	.30
Laxton's Progress05	.15	.30
Melting Sugar05	.30	.50
PEPPER			
	<i>Pkt.</i>		
Anaheim Chili05	—	—
California Wonder05	—	—
PUMPKIN			
	<i>Pkt.</i>	$\frac{1}{2}$ lb.	1 lb.
California Field05	.45	.80
Connecticut Field05	.45	.80
Japanese Pie05	.65	1.20
New England Pie05	.55	1.00
RADISH			
	<i>Pkt.</i>	$\frac{1}{2}$ lb.	1 lb.
White Tipped05	.40	.70
Crimson Giant05	.40	.70
White Icicle05	.40	.70
Long Scarlet05	.40	.70
Scarlet Globe05	.40	.70
SALSIFY			
	<i>Pkt.</i>	$\frac{1}{2}$ lb.	1 lb.
Sandwich Island05	1.10	2.00
SPINACH			
	<i>Pkt.</i>	$\frac{1}{2}$ lb.	1 lb.
Prickly05	.20	.30
Viroflay05	.20	.30
Noble05	.20	.30
SWEET ANNIS			
	<i>Pkt.</i>	$\frac{1}{2}$ lb.	1 lb.
.....	.05	.80	1.50
SQUASH			
	<i>Pkt.</i>	$\frac{1}{2}$ lb.	1 lb.
Early Bush Scallop05	.55	1.00
Banana Squash05	.55	1.00
Hubbard05	.55	1.00
Yellow Summer Crookneck05	.55	1.00
Italian Zucchini			
" " Light Green05	.65	1.20
" " Dark Green05	.75	1.40
Table Queen05	.55	1.00



CARROT



SPINACH



ASTER CALIFORNIA SUNSHINE

SWISS CHARD

	<i>Pkt.</i>	$\frac{1}{2}$ lb.	1 lb.
Giant Luculluo05	.50	.80
Large Ribbed White05	.50	.80

TOMATO

	<i>Pkt.</i>	
Kitazawa Earliana D.....	.05	
Kitazawa Earliana C.....	.05	
Marglobe (Stone Type).....	.05	
Santa Clara Canner05	
Kitazawa Special Stone05	

TURNIPS

	<i>Pkt.</i>	$\frac{1}{2}$ lb.	1 lb.
Extra Early Purple			
Top Milan05	.40	.70
Orange Jelly05	.40	.70
Purple Top White Globe05	.40	.70
Ruta Baga Purple Top05	.45	.75

WATERMELON

	<i>Pkt.</i>	$\frac{1}{2}$ lb.	1 lb.
Klondyke05	.70	1.25
Stripped Klondyke05	.70	1.20

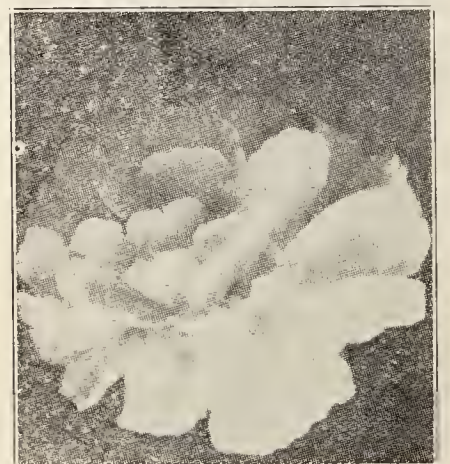
FLOWER SEEDS

AFRICAN DAISY (Demorphotheca)	10
AGERATUM (Floss Flower)	10
AQUILEGIA (Columbine)	10
AMARANTHUS	10
Caudatus (Love Lies Bleeding)	
Tricolor (Joseph's Coat)	
ALYSSUM	10
Procumbens (Carpet of Snow)	
Compactum erectum (Little Gem)	
ANTIRRHINUM (Snapdragon)	10
AUSTRALIAN PEA VINE (Dolichos)	10
ASTERS	10
Double Giant Grego	
Double Giant of California	
Double American Beauty	
BABYS BREATH (Gypsophila)	10
BACHELOR BUTTON (Centaurea)	10
BLANKET FLOWER (Gaillardia)	10
BLUE LACE FLOWER (Didiscus)	10
BALSAM (Lady's Slipper)	10
BROWALLIA	10
CANTERBURY BELL (Campanula)	10
CALENDULA (Pot Marigold)	10
CALLIOPSIS	10
CAMPANULA (Canterbury Bell)	10



CARNATION

CANDYTUFT	10
CARNATION	10
CAUCASIAN SCABIOSA	10
CELOSIA (Cockscomb)	10
CENTAUREA (Bachelor Button)	10
CHEIRANTHUS (Siberian Wallflower).....	10
CHINESE FORGET-ME-NOT	
(Cynoglossom	10
CINERARIA	10
CLARKIA (Double)	10
COCKSCOMB (Celosia)	10
COLUMBINE (Aquilegia)	10
COREOPSIS	10
COSMOS	10
CYNOGLOSSOM (Chinese Forget-me-not).....	10
DELPHINIUM	10
DIANTHUS (Pink)	10
DIDISCUS (Blue Lace Flower)	10
DIMORPHOTHECA (African Daisy)	10
DIGITALIS (Fox Glove)	10
DOLICHOS (Australian Pea Vine)	10
EVENING GLORY (Ipomoea)	10
FLOSS FLOWER (Ageratum)	10
FLOWERING SAGE (Salvia)	10
GAILLARDIA (Blanket Flower)	10
GEUM	10
GODETIA (Satinflower)	10
GOURD	10
GYPSOPHIA (Baby's Breath)	10
HELICHRYSUM (Straw Flower)	10
HOLLYHOOK	10



MARIGOLD GUINEA GOLD



PANSY

ICELAND POPPY	10
IPOMOEA	10
Bona Nox (Evening Glory)	10
Grandiflora Alba (Moon Flower)	10
Heavenly Blue (Early Flowering Sky Blue).....	10
Imperialis (Japanese Morning Glory)	10
JOSEPH'S COAT (Amaranthus)	10
KOCHIA	
(Mexican Fire Bush) Summer Cypress	10
LITTLE BLUE STAR (Ageratum)	10
LOVE IN A MIST (Nigilla)	10
LARKSPUR	10
LOBELIA	10
LOVE LIES BLEEDING (Amaranthus)	10
MARIGOLD	10
African Tall Yellow Supreme,	
Guinea Gold, French	
MEXICAN FIRE BUSH (Kichia)	10
MEXICAN SUN FLOWER (Tithonia)	10
MOON FLOWER (Ipomoea)	10
MORNING GLORY (Ipomoea)	10
MOURNING BRIDE (Scabiosa)	10
MOSS ROSE (Portulaca)	10
NASTURTIUM	10
NEMESIA	10
NIGELLA (Love in a Mist)	10
PANSY	10



SALVIA



PETUNIA



SWEET PEA

PETUNIA	10
Rosy Morn, Rose of Heaven	15
Giant Ruffled	25
PHLOX DRUMMONDI	10
POPPY	10
PORTULACA (Moss Rose)	10
PAINTED DAISY (Pyrethrum)	10
PYRETHRUM (Painted Daisy)	10
SATINFLOWER (Godetia)	10
SALPIGLOSSIS (Painted Tongue)	10
SCABIOSA (Pin Cushion Flower)	10
SCARLET RUNNER BEAN	10
SALVIA (Flowering Sage)	10
STOCK	10
SNAPDRAGON	10
STRAW FLOWER (Helichrysum)	10
SUNFLOWER (Helianthus)	10
SWEET SULTAN (Centaurea)	10
SWEET PEAS	10
Early Flowering Spencer,	
Late Flowering Spencer	
SWEET WILLIAM (Dianthus Barbatus)	10
TITHONIA (Mexican Sunflower)	10
TUFTED PANSIES (Viola Cornuta)	10
VERBENA	10
VIOLA CORNUTA (Tufted Pansies)	10
VIRGINIAN STOCK	10
WALLFLOWER (Double)	10
ZINNIA	10
Double Dahlia Flowered	10
Double Giant	10
Double Elegans	10
Double Lilliput (Pom Pom)	10



GRASS FOR LAWNS

	Lb.
ASTORIA BENT	1.50
CHEWING'S FESCUE80
KENTUCKY BLUE GRASS40
PERENNIAL RYE GRASS25
RED TOP (Fancy)35
ROUGH STALKED MEADOW50
(<i>Poa trivialis</i>)	
SEASIDE BENT	1.50
WHITE DUTCH CLOVER40
GOLDEN GATE PARK LAWN MIXTURE..	.35
BERMUDA GRASS50

ALFALFA

	Lb.
Chilian Alfalfa25
Hairy Peruvian25

BIRD SEEDS

MIXED CANARY BIRD SEED	
LOVE BIRD SEED (Mixed)	
FINCH BIRD SEED (Mixed)	
SUNFLOWER SEED	

POTATO SEEDS

ONION SET — GARLIC

EARLY ROSE	
WHITE ROSE	
OREGON BURBANK LOWTOP	
WISCONSIN PRIDE, Etc.	



ZINNIA

KITAZAWA SEED CO.

WHOLESALE AND RETAIL

85 NORTH MARKET STREET
SAN JOSE, CALIF.

FERTILIZER . . .

We handle all kinds of fertilizer. Ask for prices of quantities.

Sulphate of Ammonia, Fish Meal, Blood Meal, Bone Meal, Commercial Fertilizers, etc.

INSECTICIDES . . .

We handle all kinds of Insecticides. Ask for prices of quantities.

Nico Dust, Cubor Dust, Tomato Dust, Copper Dust, Dusting Sulpher, Volck, Lime Sulpher, Nicotine Black Leaf 40, Evergreen, Red Arrow, Flyrol, Snarol, Antrol, etc.

GARDEN TOOLS . . .

Forks, Garden Hoes, Rakes, Shovels, Gopher Traps, Mole Traps, Garden Hose, Paper Plant Covers, Pea Twine, Raffia, etc.

KITAZAWA NURSERY

BUEMON KITAZAWA, Proprietor

PHONE BALLARD 8717

597 POLHEMUS STREET, SAN JOSE, CALIF.

Nursery Located Corner Chestnut and Polhemus Street, Near Southern Pacific Railroad Tracts

NON-WARRANTY NOTICE—Kitazawa Nursery give no warranty, express or implied, as to description, quality, productiveness or any other, matter of any seeds, bulbs, plants or trees they send out, and they are not responsible in any way for the crop.

Citrus Fruits, Japanese Flowering Trees, Flowering Cherries, Flowering Peaches, Flowering Crab Apples, Flowering Almond, Flowering Quince, Shrubs, Trees, Peonies, Iris, Annual Flower Plants, Perennial Flower Plants, etc.